



# 3-WAY AIR-PILOTED & LIMIT VALVES



## 3-Way Air-Piloted Valves

3-way valves have an inlet, outlet and exhaust port. When an air signal is applied to the pilot of a Normally-Closed valve the inlet is open to the outlet and the exhaust is blocked; removing the pilot closes the inlet and the outlet is open to the exhaust port which vents to atmosphere. When an air signal is applied to the pilot of a Normally-Open valve the inlet is blocked and the outlet is vented; removing the pilot signal opens the inlet to the outlet and blocks the exhaust.

**Medium:** Air only

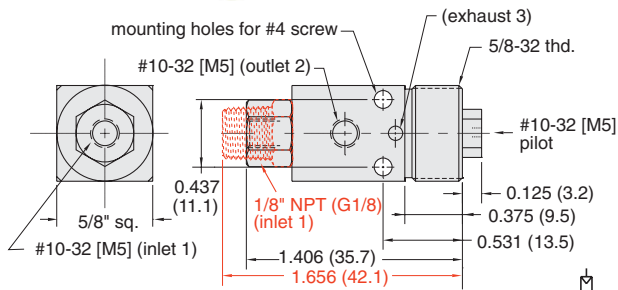
**Materials:** Brass body, Buna-N seals, stainless steel stem and spring

**Mounting:** 5/8-32 thread or #4 screw. Nut and lockwasher may be ordered separately. Part Number: PAV-MH

**Air Pilot Pressure:** 15 psig min.

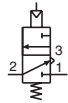
**Foot Bracket:** FB-1791

### Air-Piloted N.C. Poppet Valves

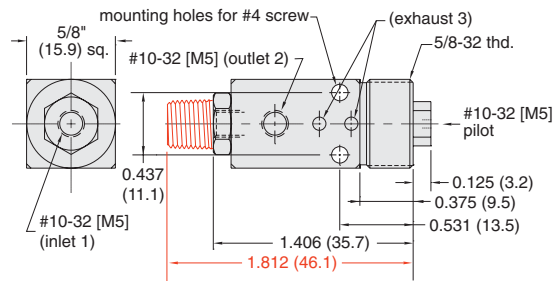


**Input Pressure:** 300 psig max.

**Air Flow:** 4.0 scfm @ 50 psig; 6.8 scfm @ 100 psig

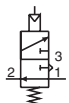


### Air-Piloted N.O. Spool Valves



**Input Pressure:** 150 psig max.

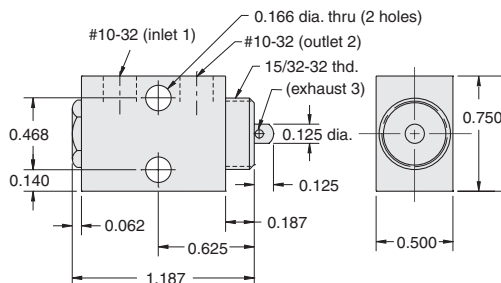
**Air Flow:** 6.8 scfm @ 50 psig; 11.6 scfm @ 100 psig



Part No.	Description
<b>PAV-3</b>	<b>Normally-Closed Poppet Valve, #10-32</b>
<b>PAV-3P</b>	<b>Normally-Closed Poppet Valve, 1/8" NPT</b>

Part No.	Description
<b>PAVO-3</b>	<b>Normally-Open Spool Valve, #10-32</b>
<b>PAVO-3P</b>	<b>Normally-Open Spool Valve, 1/8" NPT</b>

### Miniature Limit Valve



**Stem Travel:** 1/8"

**Input Pressure:** 150 psig max.

**Air Flow:** 4 scfm @ 50 psig; 7 scfm @ 100 psig

**Force for Full Stem Travel:** 48 oz. nominal

**Mounting:** Dual #20 holes or 15/32-32 thd. Nut and lockwasher furnished

Part No.	Description
<b>MLV-3</b>	<b>Normally-Closed Miniature Limit Valve</b>